



LANCASTER COUNTY
JOINING FORCES
Coordinating efforts to reduce deaths from opioids and heroin


Joining Forces:
Lancaster County's Response to the Opioid Epidemic

November 1, 2017


Presenter: Alice Yoder, RN, MSN
Facilitator, Joining Forces
Director of Community Health, Lancaster General Health/Penn Medicine

Video: Heroin(e)





one word do you think of when you hear the
'opioids'?



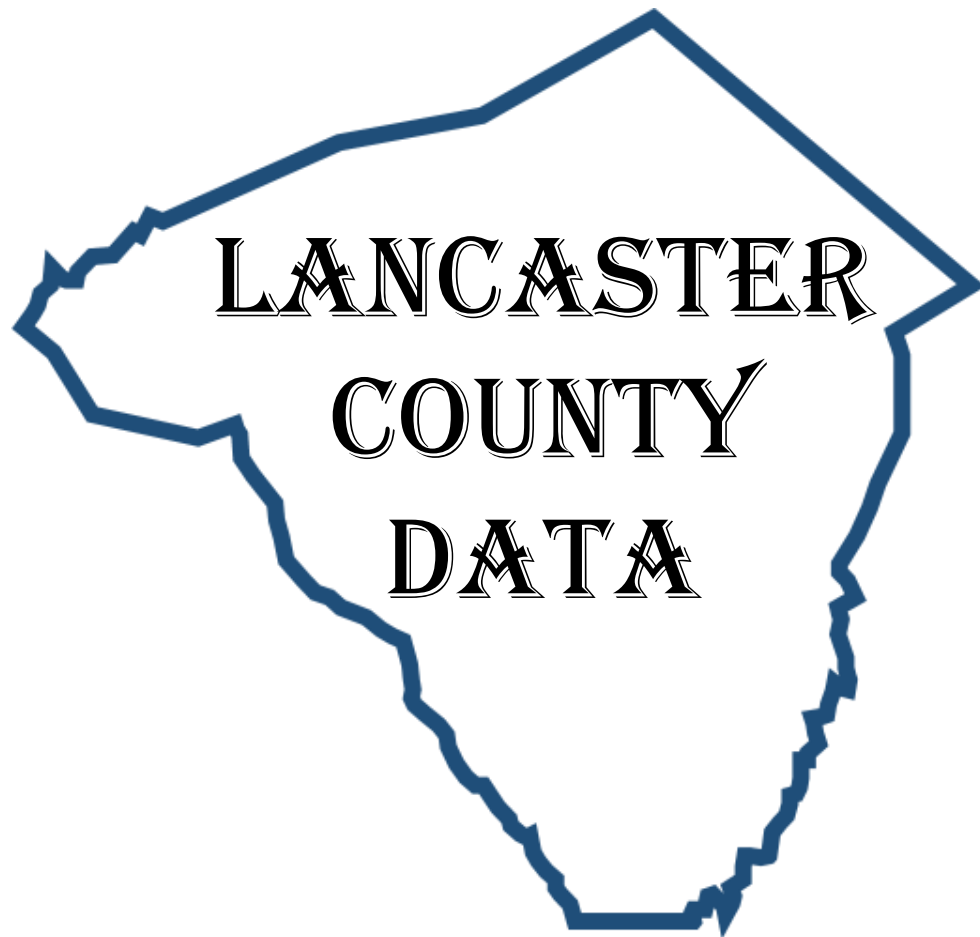
Start the presentation to activate live content



If you see this message in presentation mode, install the add-in or get help at PollEv.com/app

What do we know?

- ❑ Data
- ❑ Frameworks & guidelines
- ❑ Successful states
- ❑ Lots of meaningful work has been going on for years



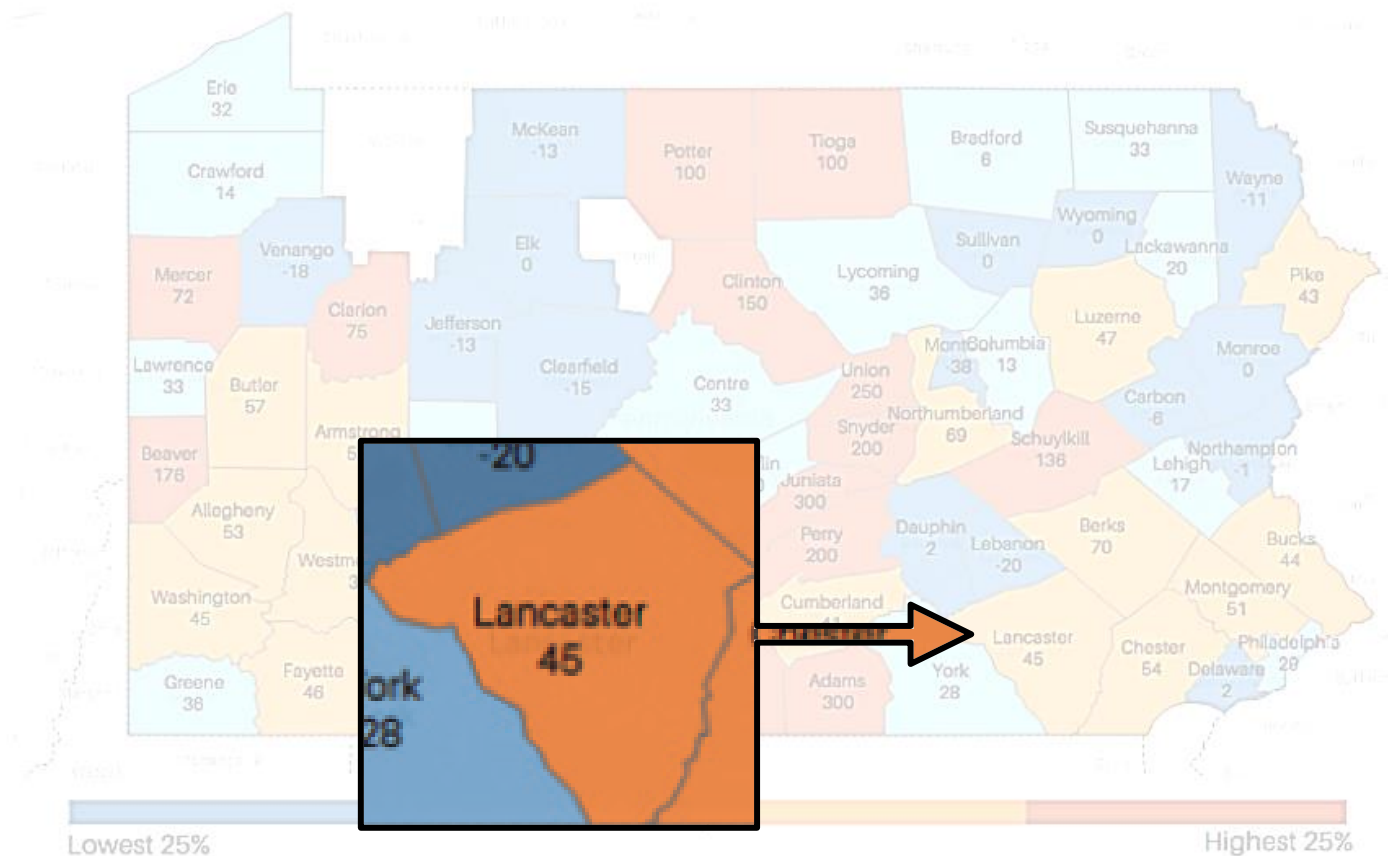
LANCASTER

COUNTY

DATA

Change In Overdose Deaths 2015-16

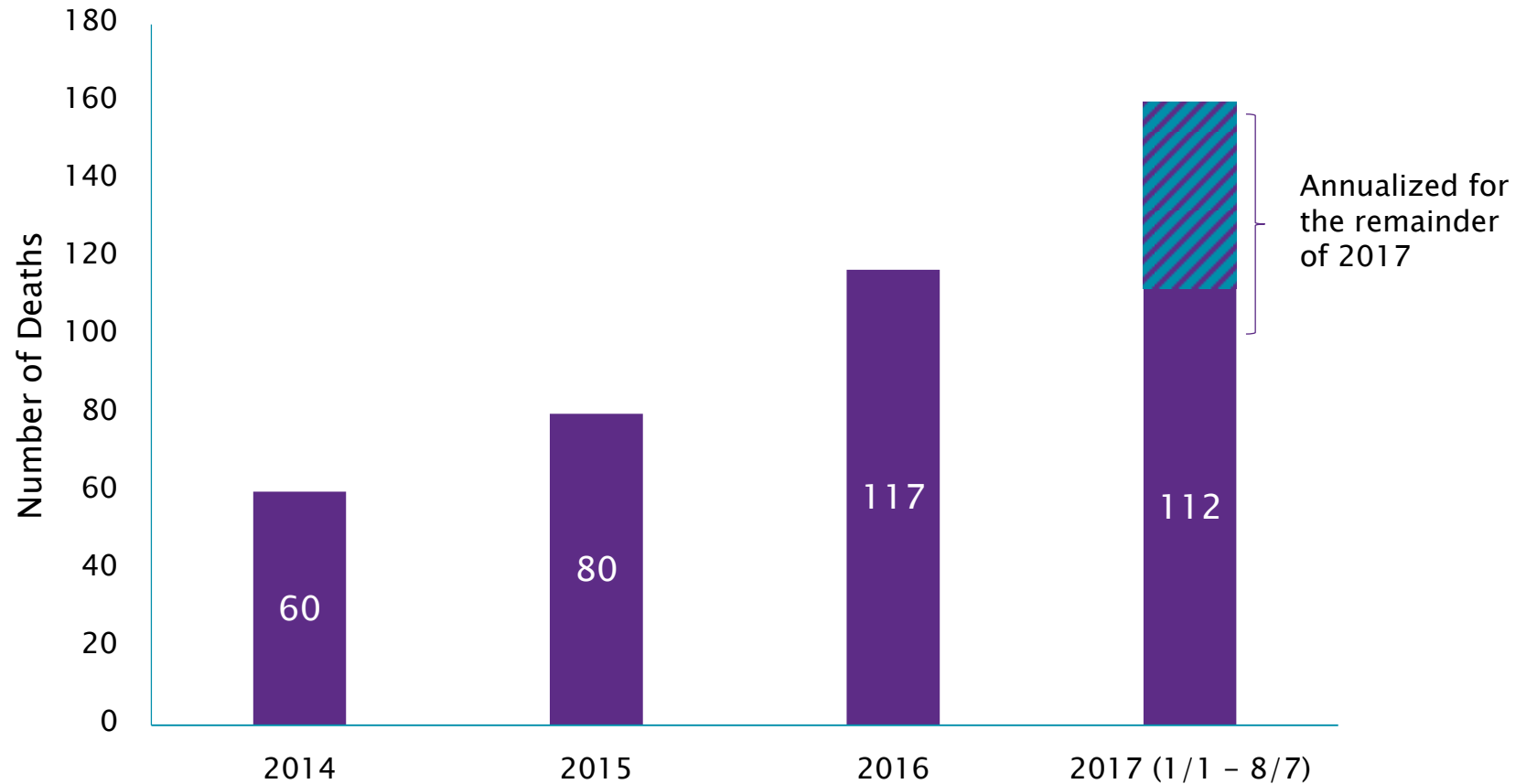
(U) Figure 3: Percent Change in Drug-Related Overdose Deaths in Pennsylvania Counties, 2015-2016



Source: Pennsylvania Coroner/Medical Examiner Data

Source: *Analysis of Overdose Deaths in Pennsylvania, 2016*. Prepared by the DEA Philadelphia Division and the University of Pittsburgh.

Total Overdose Deaths 2014-2017



Sources:

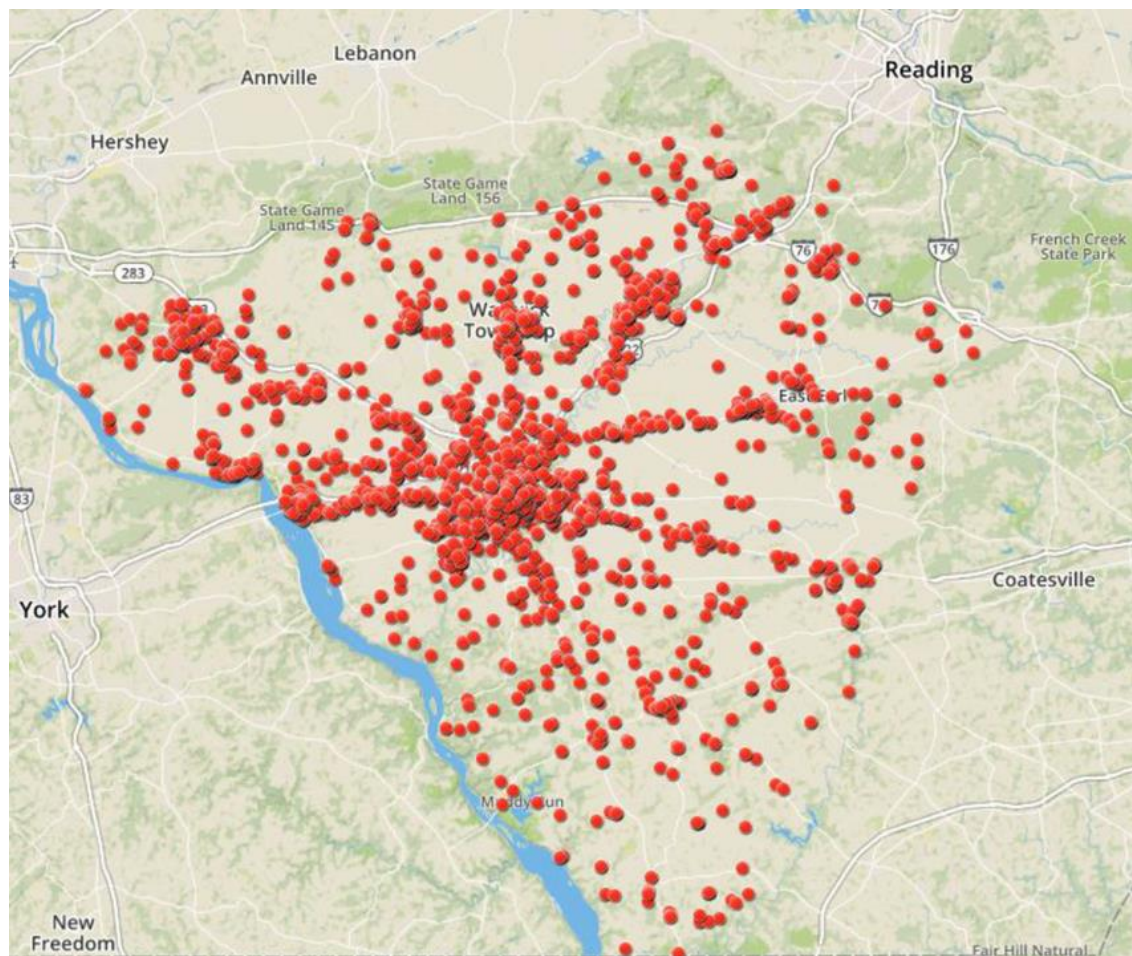
Pennsylvania State Coroners Association Report on Overdose Death Statistics, 2014

Analysis of Drug Related Overdose Deaths in Pennsylvania, 2015. Prepared by the DEA Philadelphia Field Division

Analysis of Overdose Deaths in Pennsylvania, 2016. Prepared by the DEA Philadelphia Division and the University of Pittsburgh.

Lancaster County Coroners Office

Emergency Overdose Reports 2014-2016



Source: Lancaster County-Wide Communications

Lancaster County Youth

26% of youth state that it is
“Sort of Easy” or **“Very Easy”**
to access prescription pain drugs

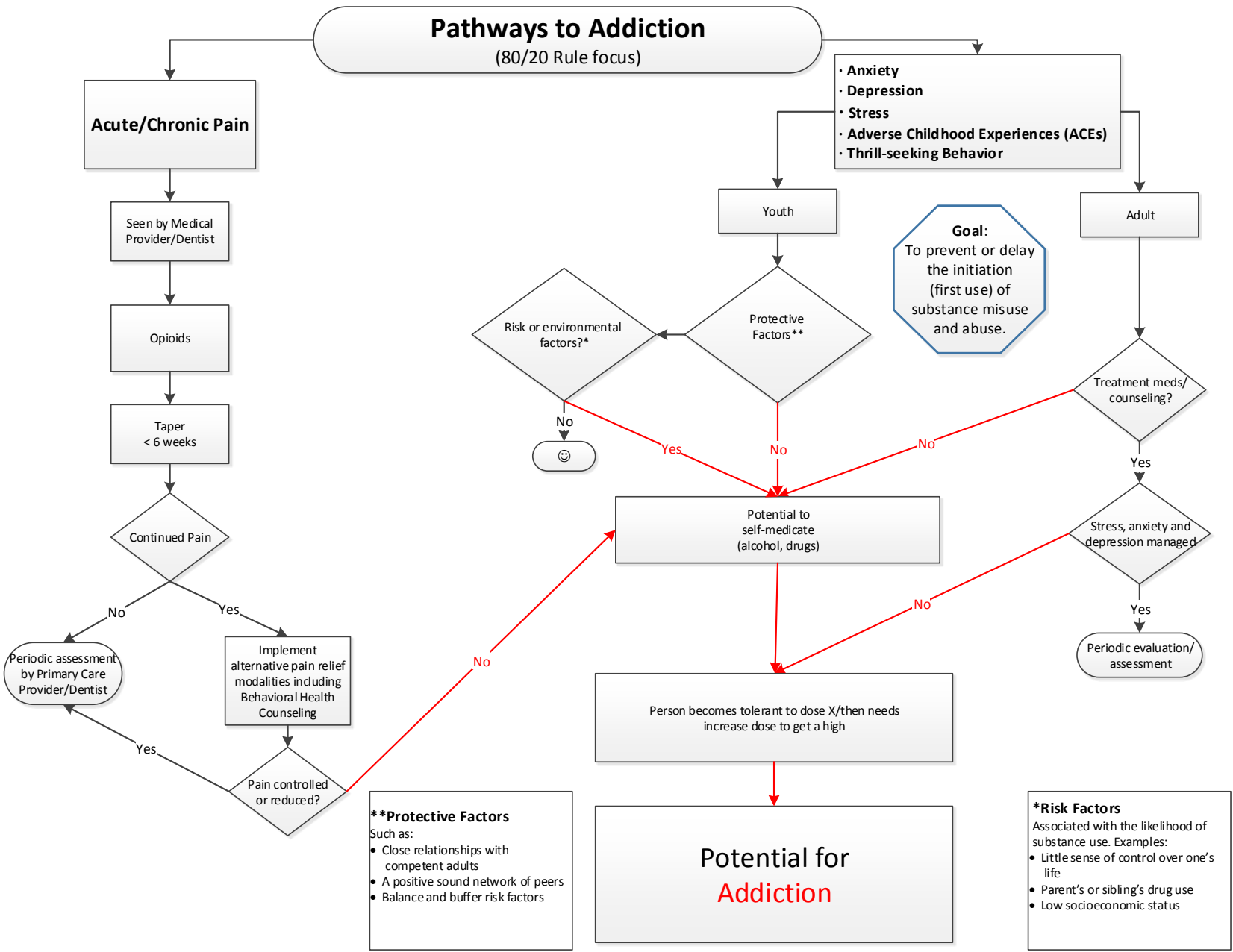
An estimated **36,822** people aged 12+ may be in need of substance abuse treatment at any given time.

So where do we turn?

What do “we” do as a community to address the issue?

Pathways to Addiction

(80/20 Rule focus)



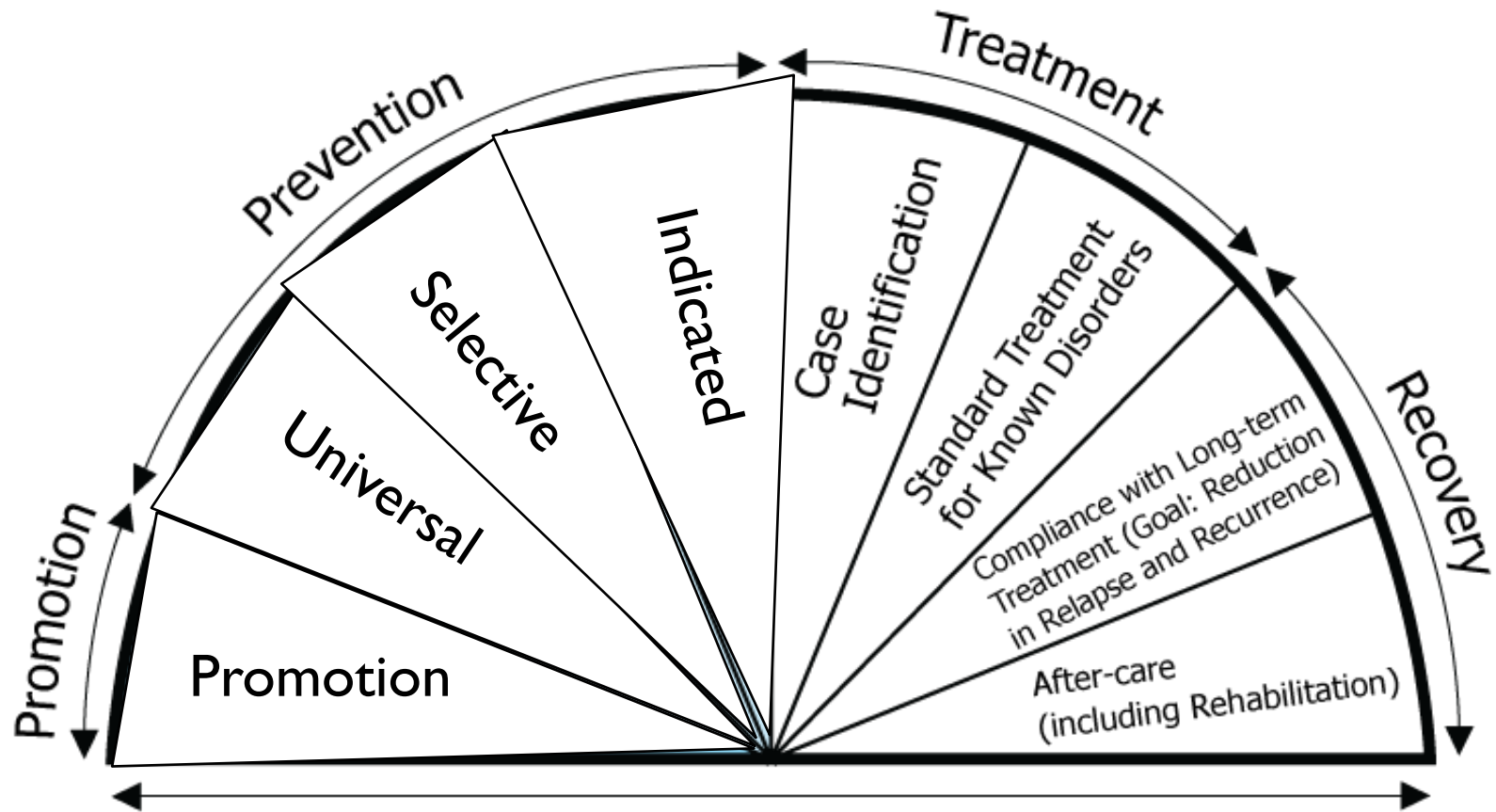
****Protective Factors**
Such as:

- Close relationships with competent adults
- A positive sound network of peers
- Balance and buffer risk factors

***Risk Factors**
Associated with the likelihood of substance use. Examples:

- Little sense of control over one's life
- Parent's or sibling's drug use
- Low socioeconomic status

Substance Abuse/Misuse Framework for Action Continuum of Care



Guidelines for Prescribing Opioids for Pain

GUIDELINE FOR PRESCRIBING OPIOIDS FOR CHRONIC PAIN



DETERMINING WHEN TO INITIATE OR CONTINUE OPIOIDS FOR CHRONIC PAIN

OPIOID SELECTION, DOSAGE, DURATION, FOLLOW-UP, AND DISCONTINUATION

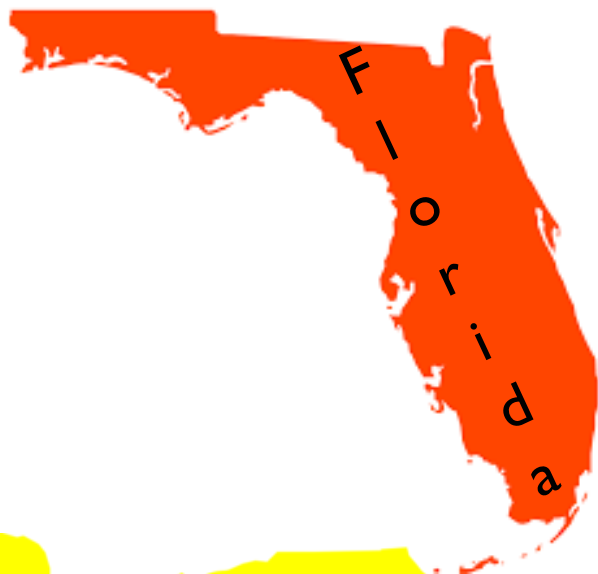
ASSESSING RISK AND ADDRESSING HARMS OF OPIOID USE



U.S. Department of
Health and Human Services
Centers for Disease
Control and Prevention

LEARN MORE | www.cdc.gov/drugoverdose/prescribing/guideline.html

Signs of Hope





LANCASTER COUNTY
JOINING FORCES
Coordinating efforts to reduce deaths from opioids and heroin

Steering Committee

- Behavioral Health
- Business
- Community Collaboratives
- County Government
- Drug & Alcohol Committee
- EMS
- Healthcare
- Law Enforcement/Corrections/Courts
- Local Government
- Prevention
- Recovery Community



LANCASTER COUNTY
JOINING FORCES
Coordinating efforts to reduce deaths from opioids and heroin

What was missing?

- ❑ Coordinate current efforts, focus evidence based practices, and fill in gaps
- ❑ Collect, trend, and report data (community-wide website)
- ❑ Targeted implementation of evidence-based strategies taken to scale



LANCASTER COUNTY
JOINING FORCES
Coordinating efforts to reduce deaths from opioids and heroin

Lancaster County Joining Forces aims to support and **coordinate efforts** to reduce deaths from opioids and heroin. In doing so, we **strengthen the great work** already happening in communities throughout the County, while allowing us to **identify gaps** in services and treatments so that we can **save lives together**. The goal is to focus on evidence-based practices outlined by the Substance Abuse and Mental Health Services Administration (SAMSHA) and the Centers for Disease Control and Prevention (CDC) to reduce exposure to opioids, prevent misuse, and treat opioid use disorder.

**OUR GOALS FOR
THE COMING YEAR
ARE TO:**

2

SATURATE

the community with unified messaging regarding the proper use, storage and disposal of prescription drugs, as well as where to get help

1

**STRENGTHEN
EFFORTS**

- Expand Emergency Department warm handoff to all hospitals
- Increase accessibility to Medication-Assisted Treatment (MAT)
- Advocate to health insurers for the need to provide coverage for treatment and alternative approaches for chronic pain, as well as lengthen the amount of time covered in treatment centers needed for opioid treatment
- Increase education and access to Naloxone
- Implement prescribing guidelines throughout health systems
- Increase the number of schools offering evidence-based substance abuse prevention programs

3

**IMPROVE PATIENT
SAFETY**

by advancing Centers for Disease Control's evidence based guidelines such as:

- Maximizing Prescription Drug Monitoring Programs
- Increase the use of alternative therapies

4

**IMPROVE DATA
COLLECTION AND
PUBLIC REPORTING**

to measure efforts

5

LAUNCH

a comprehensive county-wide website addressing all aspects of addiction with a focus on community resources

Lots of great efforts already underway!



• Creating Community Solutions to Tackle Substance Misuse



COMPASS MARK
TRANSFORMING LIVES. STRENGTHENING COMMUNITIES.



Lancaster Chamber
People | Business | Community



LANCASTER COUNTY
RECOVERY ALLIANCE



SOUTH CENTRAL PA
OPIOID AWARENESS
COALITION

Community Mobilizing Efforts

And more!

And more!

Ephrata Mayor's Roundtable on Drugs

ASAP Lititz

ELIZABETHTOWN AREA



PROJECT LAZARUS

Lancaster

DSAA



SERIOUS ADDICTION CAN START WITH A SIMPLE PRESCRIPTION

South Central PA Opioid Awareness Coalition: A united front in the war against opioid and heroin abuse



LANCASTER COUNTY
JOINING FORCES

Coordinating efforts to reduce deaths from opioids and heroin

www.lancasterjoiningforces.org